

NEWSLETTER
ISSUE NO.1
APRIL 2019



PG. 2

Construction

PG. 3

Progress

PG. 4

Site Tours

PG. 4

Marketing Suite

THE WATERSIDE APARTMENTS

INTRODUCTION

The Waterside Apartments Newsletter has been created to provide you with an overview on the current progress of The Waterside Apartments in order to keep you involved as this landmark development evolves.

CONSTRUCTION



Rear elevation from Pavilion Road – South Tower New Build.

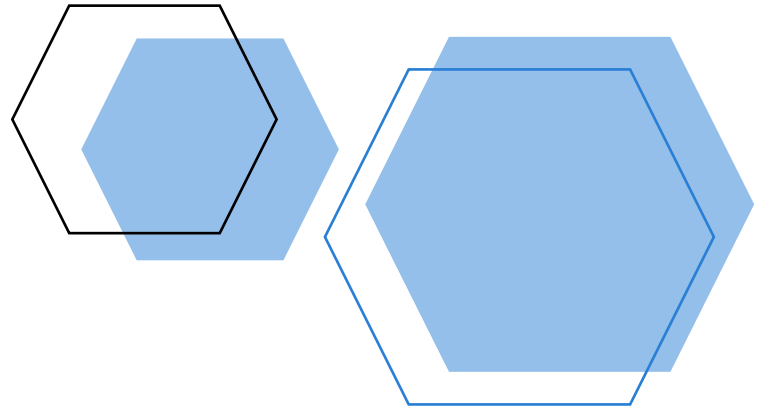
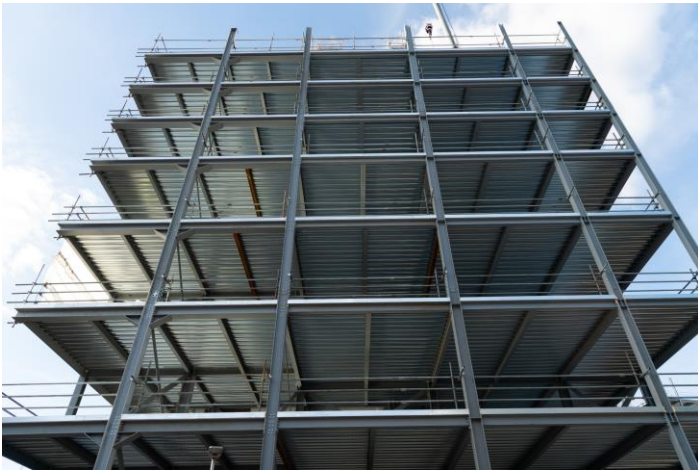
We are constructing 121 apartments, which will be a mix of 1-bedroom, 2-bedroom and 3-bedroom duplex penthouse apartments and will be developed over 11 storeys.

In the former council building, many of the apartments have been formed already as you can see. The new steelwork has commenced on both the North and South towers and has now moved onto the roof to begin the penthouse levels.

The contractor has now began concreting the floors to the towers as well as installing partition walls to bring together the layout of each apartment.



A close-up of the steel work on the North Tower.



PROGRESS

As you will see in the images provided, some apartments have now had first fix electricals complete and have been plastered.

The floor-to-ceiling glazing has been installed and has already been completed on the front elevation of the existing building.

First fix electrical supplies & plumbing are in progress throughout the building as well as glazing installation to the rear.

Kitchens are now being installed along with wall and floor tiling in bathrooms.

We would advise you visit the marketing suite, if you haven't done so already, to see the finishes for the kitchen, appliances, bathroom and flooring.

Images taken at the Marketing Suite shown below:



Two-bedroom apartment on the 1st Floor.



One-bedroom apartment above the 4th Floor.



SITE TOURS

Site tours are to be introduced as of 2nd May 2019.

It is important to remember this is still a building site so a great deal of visualisation and imagination may be required!

Small group tours will be arranged and escorted in areas of the building that allow access.

In order to arrange a site tour, please contact FHP on the details provided below.



Example Pronorm Kitchen available to see at the Marketing Suite with the light grey kitchen door finish and silestone worktop. Please note that this is representative of a 2-bed apartment.



MARKETING SUITE

The Sales Suite is open daily: Monday – Friday: 4:30pm – 6:30pm, Saturday's & Sunday's: 11.00am – 14:00pm

Please contact FHP to schedule an appointment to visit the Marketing Suite.



Nottingham & West Bridgford Offices: 0115 841 1155

